

FILED
GREENVILLE CO. S.C.

OCT 23 4 39 PM '84

DONNIE S. TANKERSLEY
R.M.C.

MAG-NORTH

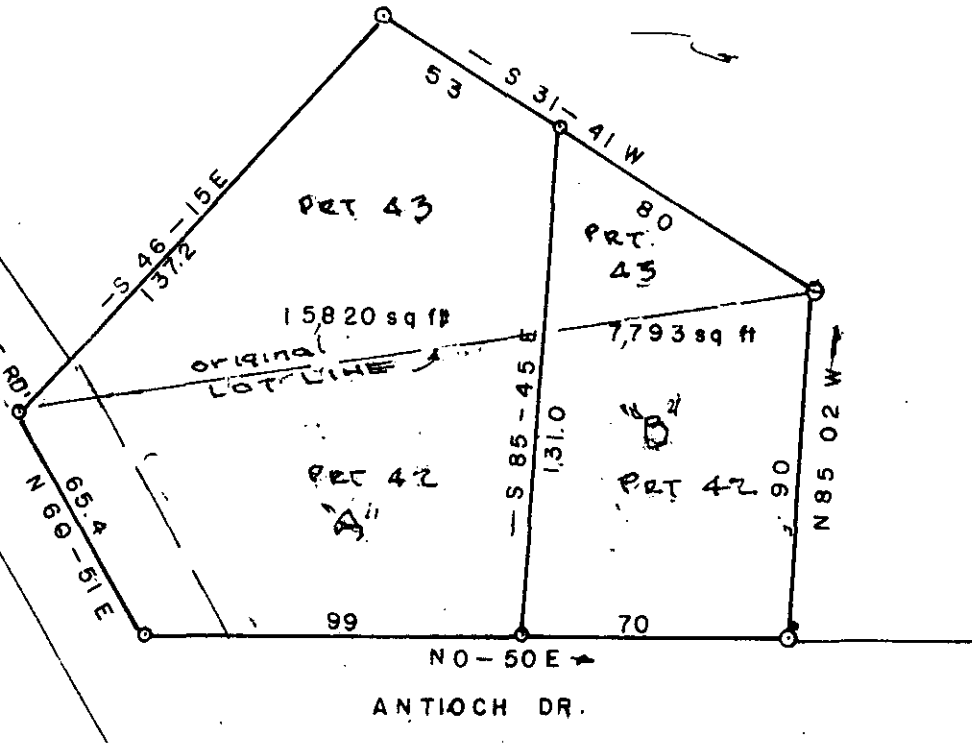
WHITE HORSE

150' TO WHITE HORSE RD.
CRESTFIELD

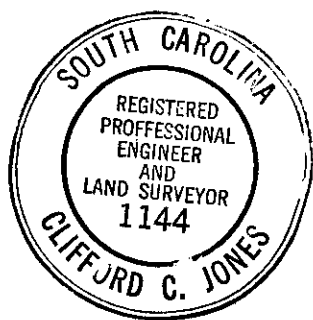
PICKLESIMON

THIS PLAT IS NOT A SUBDIVISION
AS DEFINED BY THE GREENVILLE
COUNTY SUBDIVISION REGULATIONS.

10/23/1984
John D. Williams Jr.
Chairman, Secretary, or Director of
Planning.
Greenville County Planning Commission



OCT 23 1984

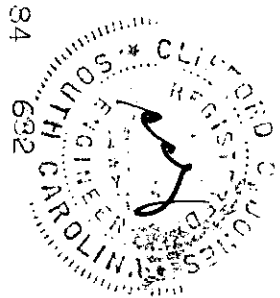


11A-37

12305

PROPERTY OF
E. O. PICKLESIMER
GREENVILLE, CO. S.C.

SCALE 1"=50 OCT 23, 1984



3.000CI

SEE PLAT-DEC-1979
AND E.P. KEARNS-PLAT.
EMCO-PLAT BK W- R 17

JONES ENGINEERING SERVICES - GREENVILLE, S.C.